

the propaedeutic and/or therapeutic conduct of the studied cases; critical review of the literature.

Helena Barbosa Lugão: Design and planning of the study; data collection, or data analysis and interpretation; statistical analysis; drafting and editing of the manuscript or critical review of important intellectual content; collection, analysis, and interpretation of data; effective participation in research orientation; intellectual participation in the propaedeutic and/or therapeutic conduct of the studied cases; critical review of the literature; approval of the final version of the manuscript.

Fernanda André Martins Cruz Perecin: Design and planning of the study; data collection, or data analysis and interpretation; statistical analysis; drafting and editing of the manuscript or critical review of important intellectual content; collection, analysis, and interpretation of data; effective participation in research orientation; intellectual participation in the propaedeutic and/or therapeutic conduct of the studied cases; critical review of the literature; approval of the final version of the manuscript.





Marco Andrey Cipriani Frade: Design and planning of the study; data collection, or data analysis and interpretation; drafting and editing of the manuscript or critical review of important intellectual content; collection, analysis, and interpretation of data; effective participation in research orientation; intellectual participation in the propaedeutic and/or therapeutic conduct of the studied cases; critical review of the literature; approval of the final version of the manuscript.

## Conflicts of interest

None declared.

## References

1. Freeman EE, McMahon DE, Lipoff JB, Rosenbach M, Kovarik C, Desai SR, et al. The spectrum of COVID-19-associated dermatologic manifestations: An international registry of 716 patients from 31 countries. *J Am Acad Dermatol.* 2020;83:1118–29.
2. Gottlieb M, Long B. Dermatologic manifestations and complications of COVID-19. *Am J Emerg Med.* 2020;38:1715–21.
3. Diaz-Guimaraens B, Dominguez-Santas M, Suarez-Valle A, Fernandez-Nieto D, Jimenez-Cauhe J, Ballester A. Annular lichen planus associated with coronavirus SARS-CoV-2 disease (COVID-19). *Int J Dermatol.* 2021;60:246–7.
4. Burgos-Blasco P, Fernandez-Nieto D, Selda-Enriquez G, Melian-Oliveira A, Perosanz-Lobo D, Dominguez-Santas M, et al. COVID-19: a possible trigger for oral lichen planus? *Int J Dermatol.* 2021;60:882–3.
5. Tziotzios C, Lee JYW, Brier T, Saito R, Hu C-K, Bhargava K, et al. Lichen planus and lichenoid dermatoses: Clinical overview and molecular basis. *J Am Acad Dermatol.* 2018;79:789–804.

Laura Murari Mondadori \*, Helena Barbosa Lugão ,  
Fernanda André Martins Cruz Perecin ,  
Marco Andrey Cipriani Frade 

*Hospital das Clínicas, Ribeirão Preto Faculty of Medicine, Universidade de São Paulo, Ribeirão Preto, SP, Brazil*

\* Corresponding author.

E-mail: [lauramondadori@gmail.com](mailto:lauramondadori@gmail.com) (L.M. Mondadori).

Received 8 September 2021; accepted 25 October 2021;  
Available online 25 January 2023

<https://doi.org/10.1016/j.abd.2021.10.016>

0365-0596/ © 2023 Published by Elsevier España, S.L.U. on behalf of Sociedade Brasileira de Dermatologia. This is an open access article under the CC BY license (<http://creativecommons.org/licenses/by/4.0/>).

## Skin nodules of distal-type epithelioid sarcoma<sup>☆</sup>



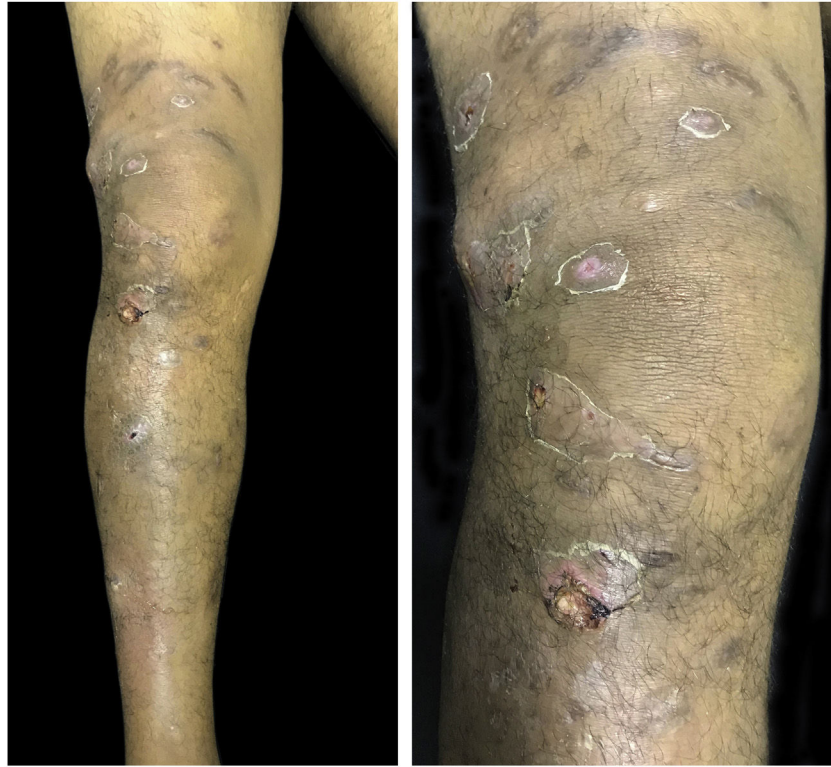
Dear Editor,

We describe a case of a 43-year-old man who was referred to the Dermatology Service, reporting the progressive appearance of painful suppurative nodules in the right lower limb for six months. The lesions started after penetrating trauma to the foot. He had hardened nodules, some of them ulcerated, on the lateral aspect of the right lower limb, in an ascending distribution (Fig. 1). Histopathology showed a malignant neoplasm infiltrating the skin and subcutaneous tissue, epithelioid cells with granulomatous morphology and an area of necrosis (Fig. 2). Cultures for bacteria, fungi, and mycobacteria showed no growth. Immunohistochemistry showed reactivity for INI-1 and lysozyme. There was focal reaction with CD68 and no reaction for EMA, CD34, desmin

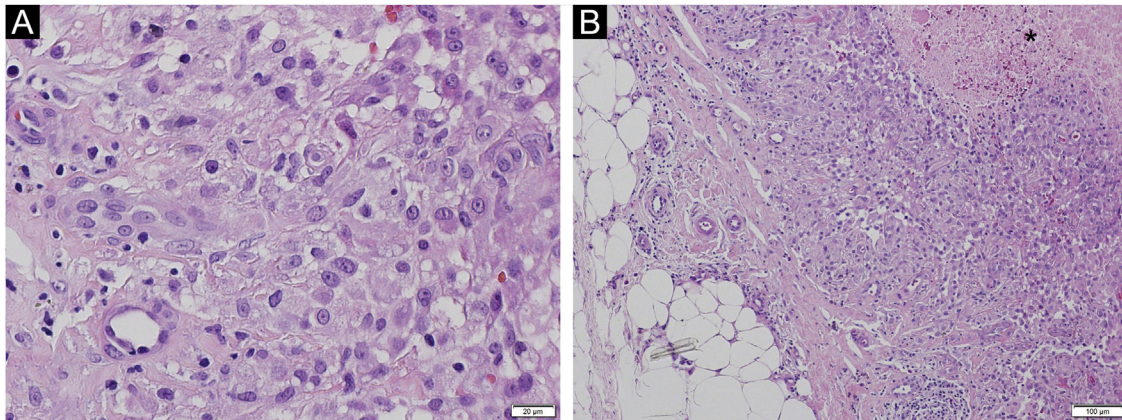
and S100, which is compatible with epithelioid sarcoma (ES). Staging showed ipsilateral inguinal lymph node enlargement measuring 3.1×2.0 cm. He underwent chemotherapy with doxorubicin with control of the appearance of new lesions and healing of old lesions.

ES is a rare subtype of soft tissue sarcoma with a high potential for local recurrence and metastases. It preferentially affects young male adults and about a quarter of cases are associated with previous trauma, such as the present one.<sup>1–3</sup> It is subdivided into proximal type, with a bad prognosis, affecting the trunk, axilla, and perineum, usually presenting as infiltrating masses in the subcutaneous tissue,<sup>3</sup> and distal type (classic), usually occurring in the extremities as firm, painless, slow-growing nodules. Microscopically, the classic form is composed of epithelioid cells with abundant eosinophilic cytoplasm in a fascicular arrangement, surrounding a central necrotic area, producing a granulomatous pattern (Fig. 2).<sup>1–3</sup> In the proximal variant, on the other hand, the cells have a rhabdoid morphology and increased atypia. There may be “signet-ring” vacuolation.<sup>3</sup> ES is positive for both epithelial and mesenchymal markers. CD34 and epithelial membrane antigen are often positive.<sup>3</sup> Typical negative markers include S100, desmin, CD68, and

<sup>☆</sup> Study conducted at the Department of Dermatology, Hospital de Clínicas de Porto Alegre, Porto Alegre, RS, Brazil.



**Figure 1** Erythematous-violaceous nodules, some of them ulcerated, in the right lower limb.



**Figure 2** Histopathology of the nodular lesion (Hematoxylin & eosin): epithelioid cells with mild atypia and granulomatous arrangement (A, B). Dermo-hypodermic infiltrate and focal areas of necrosis (\*) in the deep dermis (B).

CD31.<sup>2</sup> CD68 positivity is uncommon, but focal reaction in macrophages in ES associated with intense inflammatory infiltrate, as in the present case, has been reported.<sup>2</sup> Such a finding is mostly seen in granulomatous processes such as rheumatoid nodules and granuloma annulare.<sup>3</sup> A common characteristic of ES, present in more than 90% of cases, is the loss of expression of INI-1, the tumor suppressor gene expressed in normal nucleated cells.<sup>3,4</sup> A minority of cases of ES, as in the reported study, maintains normal INI-1 expression and may be related to a more aggressive biological behavior.<sup>3,4</sup>

The differential diagnosis includes nodules due to infectious disease, rheumatoid nodules, fibrous histiocytoma,

and other soft tissue sarcomas.<sup>3,4</sup> In the present case, the ascending trajectory of the lesions and their rapid evolution raised the hypothesis of lymphocutaneous sporotrichosis and cutaneous mycobacteriosis, which were ruled out by the cultures and histopathological analysis.

Surgery remains the mainstay of treatment in localized disease, with or without radiation, with disease-free surgical margins being the most important prognostic factor.<sup>3-5</sup> Chemotherapy is the treatment of choice for advanced disease. Recently, tazemetostat, a histone methyltransferase inhibitor, was approved for the treatment of locally advanced or metastatic ES.<sup>3</sup>

## Financial support

None declared.

## Authors' contributions

Vivian Spanemberg Macuglia: Approval of the final version of the manuscript; design and planning of the study; drafting and editing of the manuscript; intellectual participation in the propaedeutic and/or therapeutic conduct of the studied cases; critical review of the literature; critical review of the manuscript.

Juliano Peruzzo: Approval of the final version of the manuscript; design and planning of the study; drafting and editing of the manuscript; intellectual participation in the propaedeutic and/or therapeutic conduct of the studied cases; critical review of the literature; critical review of the manuscript.

Ariane Bastos Geller: Approval of the final version of the manuscript; design and planning of the study; drafting and editing of the manuscript; intellectual participation in the propaedeutic and/or therapeutic conduct of the studied cases; critical review of the literature; critical review of the manuscript.

Renan Rangel Bonamigo: Approval of the final version of the manuscript; design and planning of the study; drafting and editing of the manuscript; intellectual participation in the propaedeutic and/or therapeutic conduct of the studied cases; critical review of the literature; critical review of the manuscript.

## Conflicts of interest

None declared.

## References

1. Elsamna ST, Amer K, Elkattawy O, Beebe KS. Epithelioid sarcoma: half a century later. *Acta Oncol.* 2020;59:48–54.
2. Ardeleanu C, Comănescu M, Comănescu V, Andrei F. Uncommon pattern in soft tissues epithelioid sarcoma. *Rom Morphol Embryol.* 2005;46:229–33.
3. Regalbuto A, Tudosie A, Klenotic E. A metastatic distal-type epithelioid sarcoma: Case report and review. *Int J Surg Case Rep.* 2020;71:144–6.
4. Song L, Stashek KM, Benyounes A, Davis DL, Mulligan ME, Ng VY, et al. Epithelioid sarcoma with retained INI1 (SMARCB1) expression. *Histopathology.* 2021;78:464–9.
5. Thway K, Jones RL, Noujaim J, Fisher C. Epithelioid Sarcoma: diagnostic features and genetics. *Adv Anat Pathol.* 2016;23:41–9.

Vivian Spanemberg Macuglia <sup>a,\*</sup>, Juliano Peruzzo <sup>a</sup>, Ariane Bastos Geller <sup>a</sup>, Renan Rangel Bonamigo <sup>a,b</sup>

<sup>a</sup> *Department of Dermatology, Hospital de Clínicas de Porto Alegre, Porto Alegre, RS, Brazil*

<sup>b</sup> *Faculty of Medicine – Universidade Federal do Rio Grande do Sul, Porto Alegre, RS, Brazil*

\* Corresponding author.

E-mail: [vivianmacuglia@hotmail.com](mailto:vivianmacuglia@hotmail.com), [vmacuglia@hcpa.edu.br](mailto:vmacuglia@hcpa.edu.br) (V.S. Macuglia).

Received 20 May 2021; accepted 3 August 2021;  
Available online 20 February 2023

<https://doi.org/10.1016/j.abd.2021.08.014>  
0365-0596/ © 2023 Published by Elsevier España, S.L.U. on behalf of Sociedade Brasileira de Dermatologia. This is an open access article under the CC BY license (<http://creativecommons.org/licenses/by/4.0/>).

## Syringocystadenoma papilliferum in the scalp, with a linear presentation<sup>☆</sup>



Dear Editor,

Syringocystadenoma Papilliferum (SCAP) is an uncommon benign adnexal tumor that originates from pluripotent cells with either apocrine or eccrine sweat gland differentiation. Around 50% of cases are present at birth while 15%–30% of them can develop during puberty.<sup>1</sup> SCAP can be seen as a *de novo* tumor, without any preexisting lesion or it can coexist with both benign or malignant tumors.<sup>2</sup> The SCAP is usually located in the head and neck region. When located on the scalp, it is frequently associated with the nevus sebaceous of Jadassohn.<sup>3</sup>

There are varied clinical presentations. It can appear as a plaque-type, as a solitary papule, or as several papules with a linear arrangement as in our case.<sup>4–6</sup>

The linear presentation of SCAP is extremely rare accounting for less than 20 cases reported in the literature.<sup>6</sup> The treatment is surgical excision. In patients with unfavorable anatomic sites for surgery, a CO<sub>2</sub> laser may be effective.<sup>7</sup>

We report a case of SCAP with an atypical presentation given its size, linear arrangement, and in absence of a pre-existing nevus sebaceous.

The aim of our case report consists of the communication of the dermatoscopic features in order to contribute this data to the scientific community due to the lack of information in the literature.

A 31-year-old man was evaluated for a congenital scalp lesion. The patient noticed that the tumor had increased in size during the past 10 years. A serous discharge was detected and occasionally bleeding at minimal trauma. The physical examination revealed a pinkish-erythematous tumor with linear distribution in the occipital

<sup>☆</sup> Study conducted at the Department of Dermatology, Hospital Aleman, Buenos Aires, Argentina.