



ORIGINAL ARTICLE

Icatibant use in Brazilian patients with hereditary angioedema (HAE) type 1 or 2 and HAE with normal C1-INH levels: findings from the Icatibant Outcome Survey Registry Study*



Anete S. Grumach ^{a,*}, Marina T. Henriques ^a, Mainie L.D. Bardou ^a, Daniele A. Pontarolli ^a, Jaco Botha ^b, Mariangela Correa ^c, for the IOS Brazil Study Group

^a Clinical Immunology, Faculdade de Medicina, Centro Universitario Saúde ABC, Santo André, SP, Brazil

^b Takeda Pharmaceuticals International AG, Zurich, Switzerland

^c Takeda Distribuidora Ltda, São Paulo, SP, Brazil

Received 21 May 2021; accepted 15 September 2021

Available online 30 May 2022

KEYWORDS

Bradykinin;
Bradykinin receptor;
Brazil;
Hereditary
angioedema

Abstract

Background: Hereditary angioedema can be caused by C1-Inhibitor (C1-INH) deficiency and/or dysfunction (HAE-1/2) or can occur in patients with normal C1-INH (HAE nC1-INH).

Methods: The Icatibant Outcome Survey (IOS; NCT01034969) registry monitors the safety and effectiveness of icatibant for treating acute angioedema.

Objective: Present findings from Brazilian patients with HAE-1/2 and HAE nC1-INH participating in IOS.

Results: 42 patients were enrolled (HAE-1/2, n=26; HAE nC1-INH, n=16). Median age at symptom onset was significantly lower with HAE-1/2 vs. HAE nC1-INH (10.0 vs. 16.5y, respectively; p=0.0105), whereas median age at diagnosis (31.1 vs. 40.9y; p=0.1276) and the median time between symptom onset and diagnosis (15.0 vs. 23.8y; p=0.6680) were numerically lower vs. HAE nC1-INH, respectively. One icatibant dose was used for > 95% of HAE attacks. Median (range) time-to-event outcomes were shorter for patients with HAE nC1-INH vs. HAE-1/2, including time

* Study conducted at the Clinical Immunology, Faculdade de Medicina, Centro Universitario Saúde ABC, Santo André, SP, Brazil.

* Corresponding author.

E-mail: anete.grumach@fmabc.net (A.S. Grumach).

to first administration (0.5 [0–96.0] vs. 1.0 [0–94.0]h, respectively), time from first administration to complete resolution (1.0 [0–88.0] vs. 5.5 [0–96.0]h, respectively), and total attack duration (7.0 [0.3–99.0] vs. 18.5 [0.1–100.0]h, respectively). Mean (SD) time from attack onset to resolution was significantly shorter for patients with HAE nC1-INH vs. HAE-1/2 (9.8 [18.7] vs. 19.6 [24.0]h, respectively; $p=0.0174$). 83 adverse events (AEs) in 42 patients were reported; most were mild (66.3%) or moderate (13.3%) and non-serious (75.9%). The most common icatibant-related AE was injection site erythema (HAE-1/2, 34.6%; HAE nC1-INH, 18.8%).

Study limitations: This was an observational study without a treatment comparator and that relied on patient recall.

Conclusions: Findings demonstrate effectiveness and tolerability of icatibant in Brazilian HAE patients.

© 2022 Published by Elsevier España, S.L.U. on behalf of Sociedade Brasileira de Dermatologia. This is an open access article under the CC BY license (<http://creativecommons.org/licenses/by/4.0/>).

Introduction

Hereditary angioedema (HAE) is a rare genetic disease associated with painful swelling episodes affecting subcutaneous and/or submucosal tissues. Attacks most often involve the head and neck, extremities, and abdomen. Laryngeal edema can be life-threatening due to the risk of suffocation.^{1,2}

HAE attacks recur with unpredictable frequency and severity, disrupting patients' personal and professional lives and imposing a heavy physical and emotional burden on patients, family members, and caregivers.^{3–5} Painful, potentially debilitating swelling episodes can negatively impact patients' work productivity, hamper the achievement of educational goals, and lead to anxiety about future attacks even during attack-free periods.^{5,6} Per international HAE management guidelines, timely treatment of acute attacks and effective prevention of future attacks are integral aspects of care for patients with HAE.^{7,8} The ultimate goal is to reduce attack frequency, duration, and severity, thus minimizing the burden of disease and helping to normalize patients' daily lives.^{3,8}

HAE type 1 (due to low levels and function of C1 inhibitor [C1-INH]) or type 2 (due to presence of dysfunctional C1-INH) is primarily caused by mutations in *SERPING1*, the gene encoding for C1-INH.^{7,9} C1-INH is a serine protease that plays a pivotal role in downregulating activity in several signaling cascades, including the complement pathway, contact system (via the kallikrein-kinin cascade), coagulation pathway, and fibrinolysis.¹⁰ Within the kallikrein-kinin cascade, C1-INH is a pivotal inhibitor of factor XIIIa and plasma kallikrein, which are key plasma proteases involved in the production of bradykinin, a potent vasodilator.^{9,10} The absence of sufficient C1-INH function leads to uncontrolled activation of the kallikrein-kinin pathway and overproduction of bradykinin, the underlying cause of edema and swelling in patients with HAE type 1 or 2 (HAE-1/2).^{9,11,12}

The presence of HAE in patients with normal C1-INH levels and function (HAE nC1-INH) is also increasingly being identified; pathogenetic pathways have not yet been fully elucidated. Several mutations in genes other than *SERPING1* have been reported to date (e.g., *FXII*, *kininogen-1 heavy chain*, *plasminogen*, *angiopoietin-1*), and recent findings suggest that the presence of a myoferlin gain-of-function variant may upregulate vascular endothelial growth

factor-mediated signaling, leading to excessive vascular leakage. However, the underlying mutation often remains unknown.^{12,13} As bradykinin is believed to play an important role in the pathogenesis of clinical manifestations of HAE nC1-INH,^{11,12,14} therapies that interfere with bradykinin production or bradykinin-mediated biological activities may, in principle, also be effective in patients with these forms of HAE.¹¹ No controlled clinical trials in this setting have been conducted to date; however, evidence from case reports or observational studies show encouraging findings in some patients, including those treated with icatibant for acute HAE attacks.^{15–17} An urgent unmet need remains for further evaluation of treatment options in this patient population.

The Icatibant Outcome Survey (IOS; NCT01034969) is an ongoing, international, multicenter, observational, post-marketing registry study monitoring the safety and effectiveness of icatibant, a bradykinin B₂ receptor antagonist, for the acute treatment of angioedema attacks. The IOS was initiated (by Shire, a Takeda company) in 2009 and – as of September 30, 2019 – has enrolled 1491 patients from 13 countries, including 10 European countries as well as Australia, Brazil, and Israel.

Formal characterization of HAE in Brazil began in 2006, with the creation of the Brazilian HAE registry by the Brazilian Network on the Diagnosis, Management and Treatment of HAE; knowledge of the Brazilian HAE patient population continues to grow.¹⁸ The estimated prevalence of HAE in Brazil is 4220 patients (based on an estimated 211 million people in Brazil in 2020 and an assumed HAE worldwide prevalence of ~1:50,000).^{7,19} Clinical features and genetic mutations in Brazilian patients with HAE are increasingly being reported, including findings in patients with HAE-1/2^{20–22} and in those with HAE nC1-INH.^{16,23–25} Studies evaluating the quality of life in Brazilian patients with HAE demonstrate a heavy burden of disease in this population.^{26,27} The majority of patients reported a continual fear of life-threatening attacks and demonstrated physical and emotional impairment; the negative impact was particularly noted with regard to vitality and social function.

The current analysis reports findings from Brazilian patients (recruited from one site in Brazil) who were enrolled in the IOS through September 30, 2019, including demographics, clinical characteristics, and treatment

outcomes in patients with HAE-1/2 and those with HAE nC1-INH.

Methods

Patients and outcomes

The IOS is compliant with relevant global and local regulations and best practices and follows the Declaration of Helsinki principles and the International Conference on Harmonisation Good Clinical Practice Guidelines. Approval was granted by health authorities and local ethics committees. Written informed consent was provided by all patients (or their legally authorized representative).

The IOS registry is open to all patients with HAE who have received at least one dose of icatibant. Of note, unlike in other IOS countries, patients in Brazil were required to be aged ≥ 18 years to participate (though icatibant is now approved for use in patients aged < 18 years in Brazil). Per previously published descriptions of the IOS study design,²⁸ data on patient demographics, clinical characteristics, and history of HAE attacks (including location, frequency, severity, duration, treatment outcomes, and tolerability) were collected at enrollment, and HAE attack-related information was recorded at regular follow-up visits (optimally every 6 months). Treatment-related time-to-event outcomes evaluated were time to first administration of icatibant (duration between onset of an attack and first icatibant administration); time to complete resolution (duration between first icatibant administration and complete resolution of all symptoms), and total attack duration (time between the onset of an attack and complete resolution of all symptoms) (Fig. 1).

Adverse events (AEs) were categorized per Medical Dictionary for Regulatory Activities System Organ Classification and Preferred Terms. AEs experienced prior to enrollment were recorded at IOS entry as part of patients' medical history, whereas AEs experienced after IOS enrollment were reported during follow-up visits. Although off-label use was documented in the IOS registry as part of the safety information to be reported according to regulatory standards, such events were not regarded as clinically meaningful and, as such, were analyzed separately from the current safety analysis of AEs.

Statistical analysis

All statistical analyses were performed using SAS® software version 9.4 (SAS Institute, Cary, NC, United States). Quantitative outcome measures were reported as a number of observations, mean (Standard Deviation [SD]) or median, first quartile (25th percentile), third quartile (75th percentile), minimum, and maximum values. Statistical differences in baseline characteristics between patients with HAE-1/2 and patients with HAE nC1-INH were evaluated using the Wilcoxon test or Chi-Square test. Evaluations for time-to-treatment outcomes were performed using a mixed model for repeated measures on base ten log-transformed data. Severity comparisons (mild, moderate vs. severe, very severe) were performed using a generalized linear mixed model of repeated measures. Given the observational nature

of this registry, all analyses were considered exploratory, and p-values were interpreted descriptively.

Results

Baseline characteristics

As of September 30, 2019, a total of 42 patients from Brazil were enrolled in the IOS registry, representing 2.8% of the total patient enrollment (HAE-1/2, n=26; HAE nC1-INH, n=16). Demographic and clinical characteristics are shown in Table 1 and Fig. 2. The majority of patients were female (HAE-1/2, 84.6%; HAE nC1-INH, 100%). Most reported a positive family history (HAE-1/2, 80.8%; HAE nC1-INH, 93.8%). Median age at symptom onset was significantly lower in patients with HAE-1/2 than in those with HAE nC1-INH (10.0 vs. 16.5 years; $p=0.0105$). Median age at diagnosis (31.1 vs. 40.9 years; $p=0.1276$) and the median time between symptom onset and diagnosis (15.0 vs. 23.8 years; $p=0.6680$) were numerically lower in patients with HAE-1/2 than in those with HAE nC1-INH, respectively, but differences were not statistically significant. At the time of data cutoff, information collected on the presence or absence of specific genetic mutations in patients with HAE nC1-INH was incomplete; findings from that analysis are thus not presented.

Number of attacks and number of icatibant administrations

A total of 165 icatibant-treated attacks were reported in 18 patients with HAE-1/2, and 63 icatibant-treated attacks were reported in 10 patients with HAE nC1-INH. One icatibant administration was used for the majority of attacks (95.7% in patients with HAE-1/2; 96.7% in those with HAE nC1-INH) (Table 2). It should be noted that concomitant rescue therapy with agents other than icatibant for the treatment of HAE attacks was used by some patients (Table 3). Concomitant rescue medications may have been used to help alleviate symptoms of, rather than treat, the attack. For example, analgesics and antiemetics may have been used to treat the pain, nausea, and vomiting that can accompany abdominal attacks, and fluids may have been administered as supportive care for the same attack. In some cases, patients used multiple rescue medications, but not necessarily for the same attack. The agents used for specific attacks were not recorded.

Over the course of a mean (SD) 4.5 (1.66) years of follow-up (from IOS entry until date of data extract or discontinuation) for patients with HAE-1/2, and a mean (SD) 4.3 (1.42) years of follow-up for patients with HAE nC1-INH, the maximum number of attacks reported per patient was higher in patients with HAE-1/2 (29 attacks) than in those with HAE nC1-INH (17 attacks) (Table 2).

Location and severity of attacks

In patients with HAE-1/2, most attacks (72.6%) affected a single site – most commonly the abdomen (46.3%), followed by the skin (22.0%) (Fig. 3). The most common combination

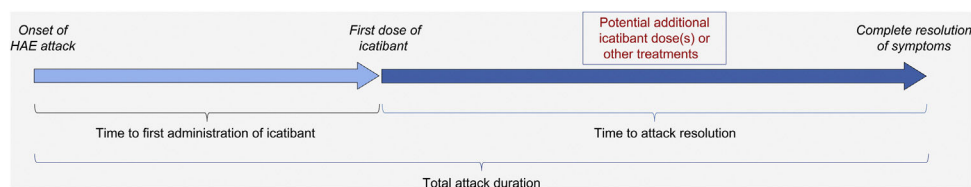


Figure 1 Treatment-related time-to-event effectiveness outcomes. Adapted from: Maurer M, et al.²⁸. HAE, Hereditary Angioedema.

Table 1 Baseline characteristics.

Characteristic	HAE-1/2 (n = 26)	HAE nC1-INH (n = 16)	Overall (n = 42)
Sex			
n (MI)	26 (0)	16 (0)	42 (0)
Female, n (%)	22 (84.6)	16 (100.0)	38 (90.5)
Male, n (%)	4 (15.4)	0	4 (9.5)
Age at HAE symptom onset (years)			
n (MI)	23 (3)	16 (0)	39 (3)
Mean (SD) ^a	10.5 (9.4)	18.9 (10.1)	14.0 (10.4)
Median (range)	10.0 (0.3–35.0)	16.5 (3.0–35.0)	14.0 (0.3–35.0)
Age at HAE diagnosis (years)			
n (MI)	25 (1)	16 (0)	41 (1)
Mean (SD) ^b	31.6 (16.2)	37.6 (15.8)	33.9 (16.1)
Median (range)	31.1 (5.1–68.0)	40.9 (7.8–62.3)	33.8 (5.1–68.0)
Time between HAE symptom onset and diagnosis (years)			
n (MI)	22 (4)	16 (0)	38 (4)
Mean (SD) ^c	18.8 (17.8)	18.8 (15.9)	18.8 (16.8)
Median (range)	15.0 (0–66.9)	23.8 (0–48.3)	16.1 (0–66.9)
Family history of HAE			
n (MI)	24 (2)	16 (0)	40 (2)
Yes, n (%) ^d	21 (87.5)	15 (93.8)	36 (90.0)
No, n (%) ^d	3 (12.5)	1 (6.3)	4 (10.0)
Age at IOS enrollment (years)			
n (MI)	26 (0)	16 (0)	42 (0)
Mean (SD)	41.9 (13.0)	42.1 (13.8)	42.0 (13.2)
Median (range)	39.8 (19.0–0.7)	42.9 (18.3–64.3)	41.9 (18.3–70.7)

HAE, Hereditary Angioedema; HAE-1/2, Hereditary Angioedema with C1-inhibitor deficiency and/or dysfunction; HAE nC1-INH, Hereditary Angioedema with normal levels and function of C1-inhibitor; IOS, Icatibant Outcome Survey; MI, missing information; SD, Standard Deviation.

^a $p = 0.0105$.

^b $p = 0.1276$.

^c $p = 0.6880$.

^d Percentages exclude missing values.

of sites involved the skin and abdomen (15.2%). In patients with HAE nC1-INH, attacks were equally likely to affect a single site or multiple sites (50% each). The skin and abdomen were the most common single sites affected (20% each). The most common combination of sites involved the skin and larynx (25.0%).

Patients with HAE nC1-INH were more likely than those with HAE-1/2 to experience severe or very severe attacks prior to treatment (61.7% vs. 48.8%, respectively). However, this difference (severe vs. very severe) was not significant ($p = 0.8906$), nor was the difference in the occurrence of mild/moderate vs. severe/very severe attacks ($p = 0.1038$) (Fig. 4).

Treatment-related time-to-event outcomes

Treatment outcome data were available for up to 142 attacks in 17 patients with HAE-1/2, and for up to 52 attacks in eight patients with HAE nC1-INH. All median (range) time-to-event outcomes were shorter for patients with HAE nC1-INH (Fig. 5), including time from attack onset to first icatibant administration (HAE nC1-INH, $n = 47$ attacks, 0.5 [0–96.0] hours; HAE-1/2, $n = 135$ attacks, 1.0 [0–94.0] hours); time from first icatibant administration to complete symptom resolution (HAE nC1-INH, $n = 52$ attacks, 1.0 [0–88.0] hours; HAE-1/2, $n = 142$ attacks, 5.5 [0–96.0] hours); and total attack duration (HAE nC1-INH, $n = 45$ attacks, 7.0 [0.3–99.0]

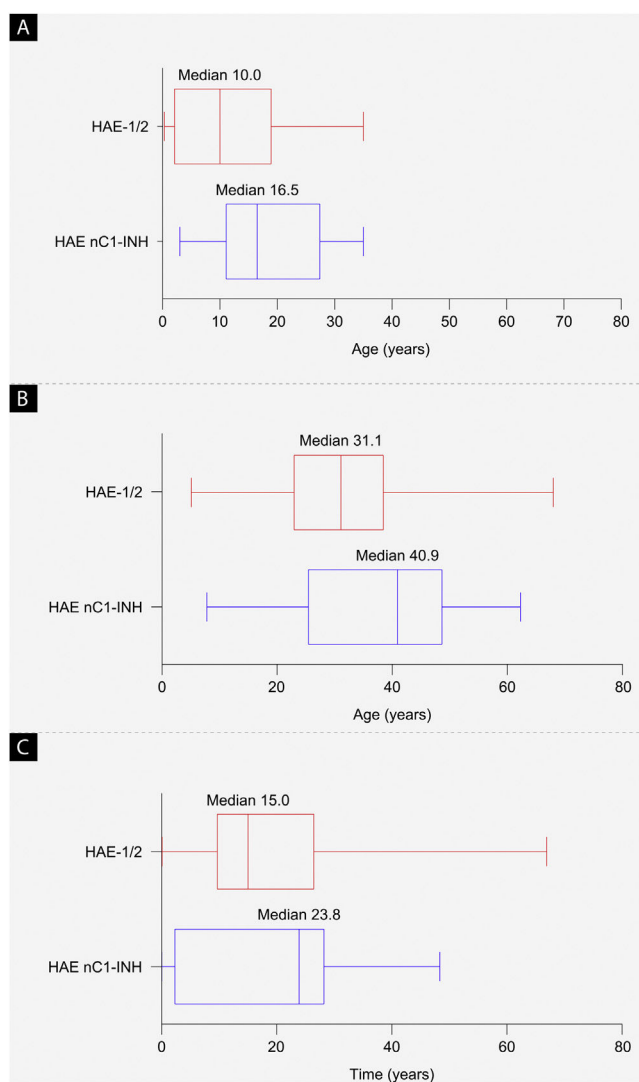


Figure 2 Baseline demographics. (a) Median age at hereditary angioedema symptom onset ($p = 0.0105$), (b) median age at diagnosis ($p = 0.1276$), and (c) median time from symptom onset to diagnosis (difference between age at first symptoms and age at diagnosis; $p = 0.6680$). The left and right edges of the boxes represent the 25th and 75th percentiles, respectively; box whiskers denote the minimum and maximum recorded values. HAE-1/2, Hereditary Angioedema with C1-inhibitor deficiency and/or dysfunction; HAE nC1-INH, Hereditary Angioedema with normal levels and function of C1-inhibitor.

Table 2 Frequency of attacks and icatibant administrations.

	HAE-1/2	HAE nC1-INH
Number of patients experiencing ≥ 1 icatibant-treated HAE attack	18	10
Number of attacks per patient		
Mean (SD)	9.2 (9.7)	6.3 (4.5)
Median (Q1, Q3)	5.5 (1.0, 18.0)	6.0 (5.0, 8.0)
Range	1–29	1–17
Percentage of attacks requiring 1, 2, or 4 icatibant administrations (%)^a		
1	95.7	96.7
2	4.3	1.7
4	0	1.7

HAE, Hereditary Angioedema; HAE-1/2, Hereditary Angioedema with C1-inhibitor deficiency and/or dysfunction; HAE nC1-INH, Hereditary Angioedema with normal levels and function of C1-inhibitor; Q, Quartile; SD, Standard Deviation.

^a Based on a total number of 164 attacks (one missing) in patients with HAE-1/2 and a total of 60 attacks (three missing) in patients with HAE nC1-INH.

Table 3 Use of medications in addition to icatibant for treated HAE attacks during the follow-up period.

Medication, n (%)	HAE-1/2 (n = 164 [1 missing])	HAE nC1-INH (n = 63)	Total (n = 227)
Analgesics	7 (4.3)	5 (7.9)	12 (5.3)
Antiemetics	5 (3.0)	0	5 (2.2)
Antifibrinolytics	15 (9.1)	31 (49.2)	46 (20.3)
Antihistamines	3 (1.8)	1 (1.6)	4 (1.8)
Attenuated androgens	5 (3.0)	0	5 (2.2)
C1-INH concentrate	15 (9.1)	0	15 (6.6)
Fluids	1 (0.6)	0	1 (0.4)
Fresh frozen plasma	1 (0.6)	0	1 (0.4)
Other	5 (3.0)	1 (1.6)	6 (2.6)
Proton pump inhibitors	1 (0.6)	0	1 (0.4)
Spasmolytics	4 (2.4)	3 (4.8)	7 (3.1)

C1-INH, C1 Inhibitor; HAE, Hereditary Angioedema; HAE-1/2, Hereditary Angioedema with C1-inhibitor deficiency and/or dysfunction; HAE nC1-INH, Hereditary Angioedema with normal levels and function of C1-inhibitor.

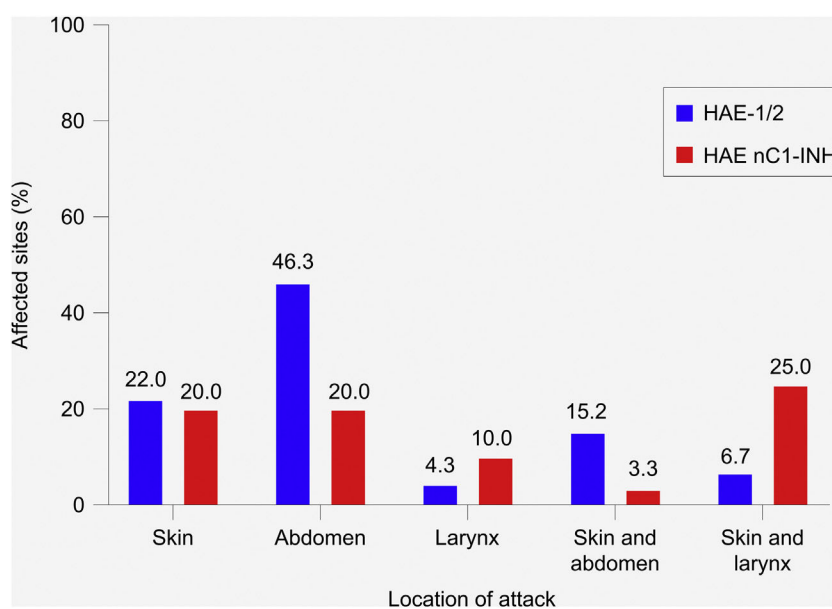


Figure 3 Most common location of hereditary angioedema attacks. HAE-1/2, n = 164 attacks (one missing); HAE nC1-INH, n = 60 attacks (three missing). Only the most common single sites and combinations of sites are shown; thus, percentages do not total 100%. Attacks affecting the skin refer to the following locations: arms, ears, eyelids, face, feet, genitals, hands, legs, lips, nose, torso, other, unknown. Abdominal attacks refer specifically to attacks affecting the gastrointestinal mucosa. HAE-1/2, Hereditary Angioedema with C1-inhibitor deficiency and/or dysfunction; HAE nC1-INH, Hereditary Angioedema with normal levels and function of C1-inhibitor.

hours; HAE-1/2, n = 124 attacks, 18.5 [0.1–100.0] hours). Of note, the mean (SD) time from attack onset to resolution was significantly shorter for patients with HAE nC1-INH vs. HAE-1/2 (9.8 [18.7] hours vs. 19.6 [24.0] hours; $p = 0.0174$) (Fig. 5).

Safety

A total of 83 events in 42 patients were reported, most of which were rated as mild (66.3%) or moderate (13.3%) in severity and non-serious (75.9%). None of the events were life-threatening or fatal. A total of 44 AEs in 16 patients were

reported as possibly (four events) or probably (40 events) related to icatibant use. The most commonly occurring icatibant-related AE was injection site erythema, affecting 34.6% of patients with HAE-1/2 and 18.8% of those with HAE nC1-INH (Table 4). No unexpected events or new safety signals were detected.

Discussion

Findings from the current analysis provide a valuable real-world representation of the use of icatibant in the treatment of patients with HAE-1/2 and HAE nC1-INH in Brazil. Though

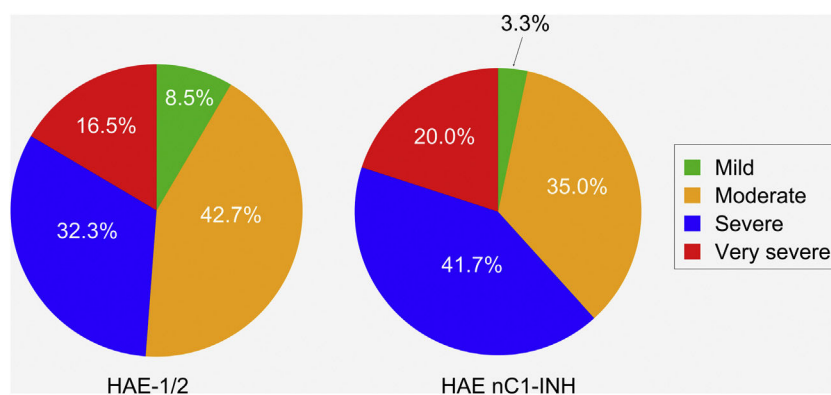


Figure 4 Severity of hereditary angioedema attacks prior to treatment. HAE-1/2, n=164 attacks (one missing); HAE nC1-INH, n=60 attacks (three missing). Attack severity was evaluated based on the following descriptions: Mild: mild interference with daily activities; Moderate: moderate interference with daily activities and no other countermeasures required; Severe: severe interference with daily activities and with or without other countermeasures; Very severe: very severe interference with daily activities and other countermeasures required. The difference between the two patient groups in the occurrence of mild/moderate vs. severe/very severe attacks was not significant ($p = 0.1038$). HAE-1/2, Hereditary Angioedema with C1-inhibitor deficiency and/or dysfunction; HAE nC1-INH, Hereditary Angioedema with normal levels and function of C1-inhibitor.

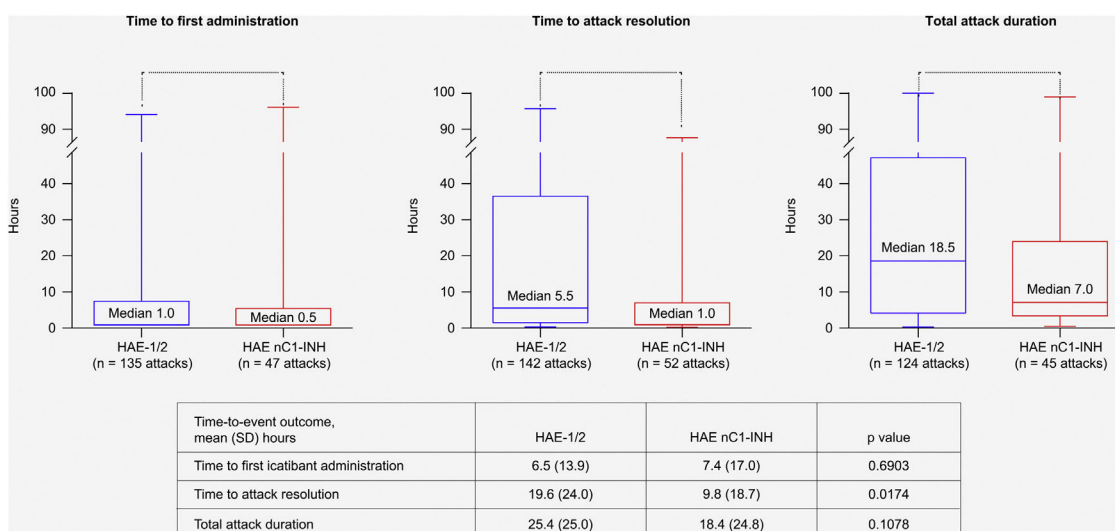


Figure 5 Time-to-event outcomes. The lower and upper edges of the boxes represent the 25th and 75th percentiles, respectively; box whiskers denote the minimum and maximum recorded values. HAE-1/2, Hereditary Angioedema type 1 or 2; HAE nC1-INH, Hereditary Angioedema with normal levels and function of C1-inhibitor; SD, Standard Deviation.

only one site in Brazil participated, a substantial number of patients were enrolled.

Baseline characteristics and clinical features of patients with HAE nC1-INH were generally consistent with previously published findings of French and Brazilian patient cohorts with HAE nC1-INH,^{16,23,29,30} and findings in patients with HAE-1/2 were consistent with previously published characteristics in Brazilian patient cohorts with HAE-1/2.^{18,21,22} Compared with patients with HAE-1/2, patients with HAE nC1-INH had an older median age at symptom onset, older age at diagnosis, and a prolonged time between the onset of symptoms and diagnosis. Over the course of a similar follow-up period for the two patient groups, patients with HAE nC1-INH experienced fewer HAE attacks than those with HAE-1/2. This finding is consistent with a higher likelihood of

disease-free intervals previously described in patients with HAE nC1-INH.³¹

In the present analysis, the location of attacks in patients with HAE-1/2 (most commonly affecting the abdomen or skin) were comparable with those previously reported in other Brazilian HAE-1/2 patient cohorts.^{18,22} Patients with HAE nC1-INH were more likely to experience laryngeal attacks and less likely to experience abdominal attacks than patients with HAE-1/2, consistent with previous reports.^{31,32} It should be noted, however, that several recently reported findings demonstrate the occurrence of abdominal attacks in > 50% of patients with HAE nC1-INH, especially in the presence of FXII mutations.^{16,23,29} The current findings further showed that regardless of HAE type, most attacks were effectively treated with one icatibant administration, as

Table 4 AEs considered as possibly or probably related to icatibant use (by Preferred Term)^a.

AE, n (%)	HAE-1/2		HAE nC1-INH	
	Patients (n = 26)	Events (n = 58)	Patients (n = 16)	Events (n = 25)
Injection site reaction				
Erythema ^b	9 (34.6)	18 (31.0)	3 (18.8)	6 (24.0)
Application site pain	2 (7.7)	3 (5.2)	1 (6.3)	1 (4)
Bruise	–	–	1 (6.3)	1 (4)
Hemorrhage	1 (3.8)	1 (1.7)	–	–
Hyperemia	3 (11.5)	4 (6.9)	–	–
Localized edema	1 (3.8)	1 (1.7)	2 (12.5)	2 (8)
Pain	3 (11.5)	3 (5.2)	1 (6.3)	1 (4)
Nausea	1 (3.8)	1 (1.7)	–	–
Edema	1 (3.8)	1 (1.7)	–	–
Angioedema ^c	1 (3.8)	1 (1.7)	–	–

AE, Adverse Event; HAE-1/2, Hereditary Angioedema with C1-inhibitor deficiency and/or dysfunction; HAE nC1-INH, Hereditary Angioedema with normal levels and function of C1-inhibitor.

^a Excluding reports of off-label use.

^b Includes the Preferred Terms “Injection site erythema” and “Application site erythema”.

^c This event was classified as a serious AE. The patient received two doses of icatibant prior to being hospitalized for 24 hours. In the hospital, the patient received fresh frozen plasma and was discharged the next day without sequelae.

previously reported in French patients with HAE-1/2, as well as those with HAE nC1-INH enrolled in the IOS.²⁹

The positive findings from this analysis of IOS patients from Brazil build upon the long-term effectiveness and safety of icatibant demonstrated from >10 years of experience with 1052 patients with HAE-1/2 in the IOS registry as of March 2019.³³ In that analysis, based on data from 5253 treated attacks, complete resolution of attack-related symptoms occurred within a median of 6 hours after the first icatibant dose. The median total attack duration was 9 hours. Of 618 patients with HAE-1/2 exposed to icatibant during the follow-up period, 24 reported a total of 75 AEs that were considered possibly or probably related to icatibant use. The most frequent icatibant-related AEs were injection site erythema (29.3%) and asthenia (9.3%).

Non-controlled studies have shown encouraging outcomes with icatibant treatment in patients with HAE nC1-INH, including case reports and retrospective analyses.^{15,17,30,34,35} Indeed, icatibant is among the treatment options recommended by current Canadian/International HAE treatment guidelines for the treatment of acute HAE attacks in patients with HAE nC1-INH (based on consensus level of evidence).⁸ Results from the current analysis of IOS Brazilian patients further emphasize the benefits of icatibant in patients with HAE nC1-INH. Findings showed a favorable trend for more rapid effects than in patients with HAE-1/2, including a shorter median time to complete resolution and shorter median total attack duration, though the only statistically significant difference between the two patient groups in this cohort was mean time from first icatibant administration to complete resolution of symptoms. Of note, the shorter median time from onset of attack to first icatibant administration for patients with HAE nC1-INH may have contributed

to the improved time-to-event outcomes compared with patients with HAE-1/2, in line with previously published IOS data showing that earlier administration of icatibant results in more rapid resolution of HAE attacks.²⁸

The safety profile of icatibant in the current analysis was comparable between patients with HAE-1/2 and those with HAE nC1-INH; injection site-related reactions were the most frequently reported AEs. Findings are consistent with the icatibant safety profile reported in pivotal controlled trials in patients with HAE-1/2^{36,37} as well as in other post-marketing analyses of IOS patients and icatibant-treated patients with HAE nC1-INH in non-controlled studies.^{29,34,38}

Various limitations are inherent in an observational study design, including a lack of treatment comparator and reliance on patient recall, potentially leading to under-reporting of milder attacks or incomplete reporting of symptoms. Additionally, all analyses were post hoc, and the sample was not powered to show any differences; as such, results of comparisons between the two patient groups should be interpreted with caution. Despite these inherent limitations, however, registries such as the IOS are useful tools for gleaning insights about HAE beyond controlled clinical trial settings and for evaluating the effectiveness and safety of icatibant over extended time periods.

Of note, icatibant was launched in Brazil in 2009 and is approved by ANVISA (Brazil National Health Surveillance Agency), however, it has not been introduced in the official protocol from the Brazilian Ministry of Health. As such, government funding for its use is not currently provided, so patient access to this therapy remains a challenge. It is hoped that the continued reporting of icatibant effectiveness and safety findings, such as those reported herein, will help improve the accessibility of this agent for the treatment of HAE in Brazil.

Conclusions

Characterization of various forms of HAE around the world continues to grow, paving the way to improved understanding of underlying genetic mutations, patient demographics, and treatment outcomes across varied HAE patient populations. The current analysis provides support for the effectiveness, safety, and tolerability of icatibant in Brazilian patients with HAE.

Financial support

This research is sponsored by Shire Human Genetic Therapies, Inc., a Takeda company. Anete S. Grumach has a productivity scholarship CNPq. (309824/2021-4).

Authors' contributions

Anete S. Grumach: Study conception and planning; data collection, analysis, and interpretation; preparation and writing of the manuscript and manuscript critical review; approval of the final version of the manuscript.

Marina T. Henriques: Data collection, analysis and/or interpretation; preparation and writing of the manuscript and manuscript critical review; approval of the final version of the manuscript.

Maine L.D. Bardou: Data collection, analysis and/or interpretation; preparation and writing of the manuscript and manuscript critical review; approval of the final version of the manuscript.

Daniele A. Pontarolli: Data collection, analysis and/or interpretation; preparation and writing of the manuscript and manuscript critical review; approval of the final version of the manuscript.

Jaco Botha: Data collection, analysis and/or interpretation; preparation and writing of the manuscript and manuscript critical review; approval of the final version of the manuscript.

Mariangela Correa: Data collection, analysis and/or interpretation; preparation and writing of the manuscript and manuscript critical review; approval of the final version of the manuscript.

Conflicts of interest

Anete S. Grumach has been a speaker or consultant for BioCryst, Biotest, CSL Behring, and Takeda. Marina T. Henriques, Maine L. D. Bardou, and Daniele A. Pontarolli have no conflicts of interest to declare. J. Botha is an employee of and owns stock/stock options in Takeda. M. Correa was an employee of and held stock/stock options in Takeda at the time of this analysis.

Acknowledgments

Under the direction of the authors, Sophia Shumyatsky, PharmD, CMPP, an employee of Excel Medical Affairs, provided writing assistance for this manuscript. Editorial assistance in formatting, proofreading, copyediting, and fact-checking also was provided by Excel Medical Affairs.

Takeda Development Center Americas, Inc. provided funding to Excel Medical Affairs for support in writing and editing this manuscript. The interpretation of the data was made by the authors independently. The role of Takeda employees in the design of the study and collection, analysis, and interpretation of data and in writing the manuscript are specified within the author contributions section. The authors thank all of the IOS investigators for their contributions to the IOS registry.

References

- Gill P, Betschel SD. The clinical evaluation of angioedema. *Immunol Allergy Clin North Am.* 2017;37:449–66.
- Bork K, Hardt J, Witzke G. Fatal laryngeal attacks and mortality in hereditary angioedema due to C1-INH deficiency. *J Allergy Clin Immunol.* 2012;130:692–7.
- Craig T, Busse P, Gower RG, Johnston DT, Kashkin JM, Li HH, et al. Long-term prophylaxis therapy in patients with hereditary angioedema with C1 inhibitor deficiency. *Ann Allergy Asthma Immunol.* 2018;121:673–9.
- Granero-Molina J, Sánchez-Hernández F, Fernández-Sola C, Jiménez-Lasserrotte MDM, Antequera-Raynal LH, Hernández-Padilla JM. The diagnosis of hereditary angioedema: family caregivers' experiences. *Clin Nurs Res.* 2020;29:117–26.
- Banerji A. The burden of illness in patients with hereditary angioedema. *Ann Allergy Asthma Immunol.* 2013;111:329–36.
- Banerji A, Davis KH, Brown TM, Holis K, Hunter SM, Long J, et al. Patient-reported burden of hereditary angioedema: findings from a patient survey in the United States. *Ann Allergy Asthma Immunol.* 2020;124:600–7.
- Maurer M, Magerl M, Ansotegui I, Aygören-Pürsün E, Betschel S, Bork K, et al. The international WAO/EAACI guideline for the management of hereditary angioedema - the 2017 revision and update. *Allergy.* 2018;73:1575–96.
- Betschel S, Badiou J, Binkley K, Borici-Mazi R, Hébert J, Kanani A, et al. The International/Canadian Hereditary Angioedema Guideline. *Allergy Asthma Clin Immunol.* 2019;15:72.
- Kaplan A, Pawaskar D, Chiao J. C1 inhibitor activity and angioedema attacks in patients with hereditary angioedema. *J Allergy Clin Immunol Pract.* 2020;8:89–900.
- Levi M, Cohn D. The role of complement in hereditary angioedema. *Transfus Med Rev.* 2019;33:243–7.
- Cicardi M, Zuraw BL. Angioedema due to bradykinin dysregulation. *J Allergy Clin Immunol Pract.* 2018;6:1132–41.
- Busse P, Christiansen S. Hereditary angioedema. *N Engl J Med.* 2020;382:1136–48.
- Ariano A, D'Apolito M, Bova M, Bellanti F, Loffredo S, D'Andrea G, et al. A myoferlin gain-of-function variant associates with a new type of hereditary angioedema. *Allergy.* 2020;75:2989–92.
- Banday AZ, Kaur A, Jindal AK, Rawat A, Singh S. An update on the genetics and pathogenesis of hereditary angioedema. *Genes Dis.* 2019;7:75–83.
- Bork K, Wulff K, Steinmüller-Magin L, Braenne I, Staubach-Renz P, Witzke G, et al. Hereditary angioedema with a mutation in the plasminogen gene. *Allergy.* 2018;73:442–50.
- Veronez CL, Moreno AS, Constantino-Silva RN, Maia LSM, Ferrani MPL, Castro FFM, et al. Hereditary angioedema with normal C1 inhibitor and F12 mutations in 42 Brazilian families. *J Allergy Clin Immunol Pract.* 2018;6:1209–16.
- McKibbin L, Barber C, Kalicinsky C, Warrington R. Review of the Manitoba cohort of patients with hereditary angioedema with normal C1 inhibitor. *Allergy Asthma Clin Immunol.* 2019;15:66.
- Grumach AS, Valle SO, Toledo E, Vasconcelos DM, Villela MMS, Mansour E, et al. Hereditary angioedema: first report of the

- Brazilian registry and challenges. *J Eur Acad Dermatol Venereol*. 2013;27:e338–44.
19. [ibge.gov](http://ibge.gov.br) [Internet]. Instituto Brasileiro de Geografia e Estatística. Projeção da população do Brasil e das Unidades da Federação; [cited 2020 Nov 23]. Available from: <https://www.ibge.gov.br/apps/populacao/projecao/index.html>.
 20. Ferraro MF, Moreno AS, Castelli EC, Donadi EA, Palma MS, Arcuri HA, et al. A single nucleotide deletion at the C1 inhibitor gene as the cause of hereditary angioedema: insights from a Brazilian family. *Allergy*. 2011;66:1384–90.
 21. Maia LSM, Moreno AS, Ferriani MPL, Nunes FL, Ferraro MF, Dias MM, et al. Genotype-phenotype correlations in Brazilian patients with hereditary angioedema due to C1 inhibitor deficiency. *Allergy*. 2019;74:1013–6.
 22. Alonso MLO, Valle SOR, Tórtora RP, Grumach AS, França AT, Ribeiro MG. Hereditary angioedema: a prospective study of a Brazilian single-center cohort. *Int J Dermatol*. 2020;59:341–4.
 23. Moreno AS, Valle SOR, Levy S, França AT, Serpa FS, Arcuri HA, et al. Coagulation factor XII gene mutation in Brazilian families with hereditary angioedema with normal C1 inhibitor. *Int Arch Allergy Immunol*. 2015;166:114–20.
 24. Miranda AR, de Ue APF, Sabbag DV, de Jesus Furlani W, Souza PK, Rotta O. Hereditary angioedema type III (estrogen-dependent) report of three cases and literature review. *An Bras Dermatol*. 2013;88:578–84.
 25. Stieber C, Grumach AS, Cordeiro E, Constantino-Silva RN, Barth S, Hoffmann P, et al. First report of a FXII gene mutation in a Brazilian family with hereditary angio-oedema with normal C1 inhibitor. *Br J Dermatol*. 2015;173:1102–4.
 26. Barbosa AA, de Oliveira Martins R, Martins R, Grumach AS. Assessment on hereditary angioedema burden of illness in Brazil: a patient perspective. *Allergy Asthma Proc*. 2019;40:193–7.
 27. Gomide MACMS, Toledo E, Valle SOR, Campos RA, França AT, Gomez NP, et al. Hereditary angioedema: quality of life in Brazilian patients. *Clinics (Sao Paulo)*. 2013;68:81–3.
 28. Maurer M, Aberer W, Bouillet L, Caballero T, Fabien V, Kanny G, et al. Hereditary angioedema attacks resolve faster and are shorter after early icatibant treatment. *PLoS One*. 2013;8:e53773.
 29. Bouillet L, Boccon-Gibod I, Launay D, Gompel A, Kanny A, Fabien V, et al. Hereditary angioedema with normal C1 inhibitor in a French cohort: clinical characteristics and response to treatment with icatibant. *Immun Inflamm Dis*. 2017;5:29–36.
 30. Belbézier A, Hardy G, Marlu R, Defendi F, Perard CD, Boccon-Gibod I, et al. Plasminogen gene mutation with normal C1 inhibitor hereditary angioedema: three additional French families. *Allergy*. 2018;73:2237–9.
 31. Magerl M, Germenis AE, Maas C, Maurer M. Hereditary angioedema with normal C1 inhibitor: update on evaluation and treatment. *Immunol Allergy Clin North Am*. 2017;37:571–84.
 32. Zuraw BL, Bork K, Binkley KE, Banerji A, Christiansen SC, Castaldo A, et al. Hereditary angioedema with normal C1 inhibitor function: consensus of an international expert panel. *Allergy Asthma Proc*. 2012;33 Suppl 1:S145–56.
 33. Maurer M, Longhurst HJ, Bouillet L, Caballero T, Grumach AS, Botha J, et al. Long-term effectiveness and safety of icatibant for the on-demand treatment of hereditary angioedema attacks: 10 years of the Icatibant Outcome Survey. Abstract 1118. *Allergy*. 2020;75:59–60.
 34. Bouillet L, Boccon-Gibod I, Ponard D, Drouet C, Cesbron JY, Dumestre-Perard C, et al. Bradykinin receptor 2 antagonist (icatibant) for hereditary angioedema type III attacks. *Ann Allergy Asthma Immunol*. 2009;103:448.
 35. Deroux A, Boccon-Gibod I, Fain O, Pralong P, Ollivier Y, Pagneur A, et al. Hereditary angioedema with normal C1 inhibitor and factor XII mutation: a series of 57 patients from the French National Center of Reference for Angioedema. *Clin Exp Immunol*. 2016;185:332–7.
 36. Cicardi M, Banerji A, Bracho F, Malbrán A, Rosenkranz B, Riedl M, et al. Icatibant, a new bradykinin-receptor antagonist, in hereditary angioedema. *N Engl J Med*. 2010;363:532–41.
 37. Lumry WR, Li HH, Levy RJ, Potter PC, Farkas H, Moldovan D, et al. Randomized placebo-controlled trial of the bradykinin B2 receptor antagonist icatibant for the treatment of acute attacks of hereditary angioedema: the FAST-3 trial. *Ann Allergy Asthma Immunol*. 2011;107:529–37.
 38. Boccon-Gibod I, Bouillet L. Safety, and efficacy of icatibant self-administration for acute hereditary angioedema. *Clin Exp Immunol*. 2012;168:303–7.